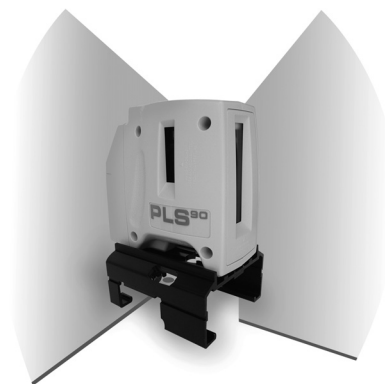


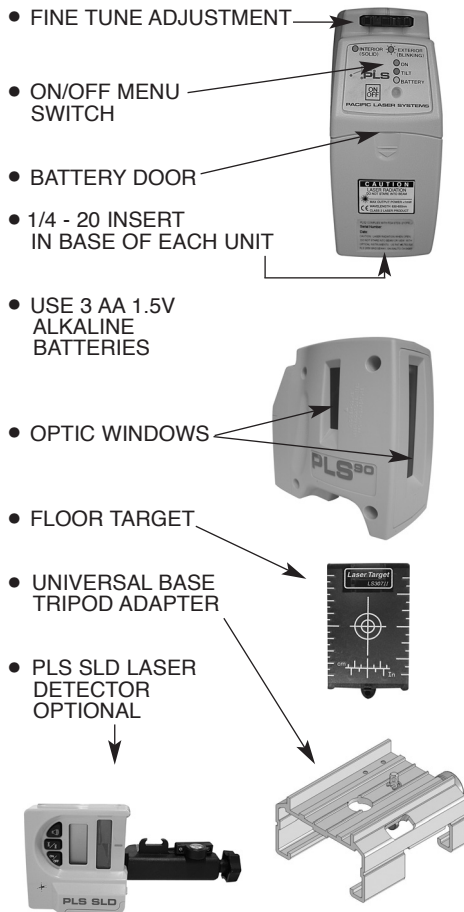
PLS90



PACIFIC LASER SYSTEMS

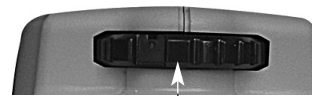
The Professional Standard

FEATURES

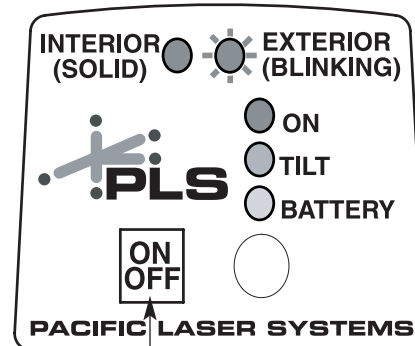
- FINE TUNE ADJUSTMENT
 - ON/OFF MENU SWITCH
 - BATTERY DOOR
 - 1/4 - 20 INSERT IN BASE OF EACH UNIT
 - USE 3 AA 1.5V ALKALINE BATTERIES
 - OPTIC WINDOWS
 - FLOOR TARGET
 - UNIVERSAL BASE TRIPOD ADAPTER
 - PLS SLD LASER DETECTOR OPTIONAL
- 

Please review the PLS SLD Laser Detector operating manual for use with PLS90 for exterior application.

MENU SWITCH



USE FINE TUNE ADJUSTMENT KNOB TO DIAL IN BEAM FOR PRECISE LAYOUT.



ON/OFF BUTTON

FIRST PUSH: INTERIOR

SECOND PUSH: EXTERIOR

THIRD PUSH: OFF

INDICATOR FUNCTIONS

GREEN LIGHT:	ON
RED LIGHT:	EXCEEDS TILT
AMBER LIGHT:	BATTERY LOW
SOLID LIGHT:	INTERIOR
BLINKING LIGHT:	EXTERIOR

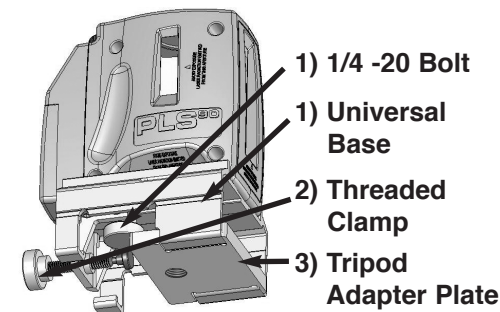
UNIVERSAL BASE-TRIPOD ADAPTER

The Universal Base-Tripod Adapter is included with your PLS90. It is made up of three components: 1) base, 2) tripod adapter plate and 3) batter board trivet brace.

1. When using your PLS90 on the floor or concrete slab, attach the PLS90 to the **universal base** by inserting its **1/4-20 bolt** into the 1/4-20 insert on bottom of the PLS90. Note: by removing the batter board trivet brace from the universal base, you can position the PLS90 on the universal base in either direction. This gives you clear sight of the PLS90 down laser point and intersection lines. Now you can set your 90 degree layout for tile or wall track.

2. When using the PLS90 on batter board or fixed straight-edge, attach the PLS90 to the universal base. Point the nose away from the **threaded clamp**. Attach the PLS90 base to the batter board or fixed straight-edge. Do this by sliding the notched legs of the universal base onto the batter board or fixed straight-edge. Secure it with the threaded clamp brace attached to the base. The down beam of the PLS90 should project closely in front of the batter board or fixed straight-edge. The right beam should run parallel to the batter board.

3. When using your PLS90 on a 5/8-11 threaded tripod, attach the PLS **tripod adapter plate** to the PLS universal base. Bolt the tripod threaded rod through the adapter plate. The down beam of the PLS90 will project through the hole of the adapter plate and the universal base. The hole of the tripod adapter plate will align with the hole of the universal base.



CHECK SQUARE

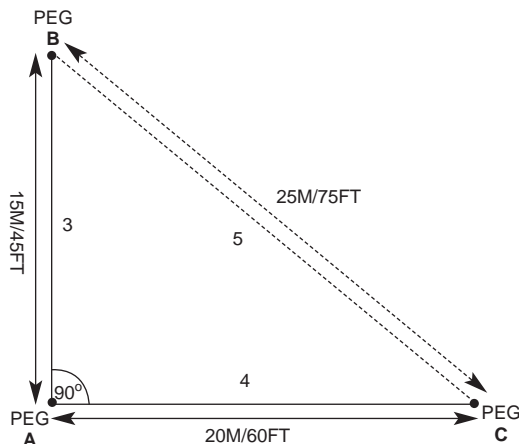
CHECKING THE PLS90 ON THE JOB SITE
USING PYTHAGORAS 3-4-5 TRIANGLE:

Set up over the center of PEG (A) using the
plumb down laser dot.

Using one of the 90 degree beams put PEG (B)
in the ground at an exact distance of 15M/45 FT
from PEG (A).

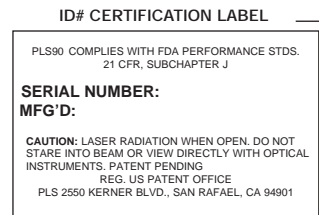
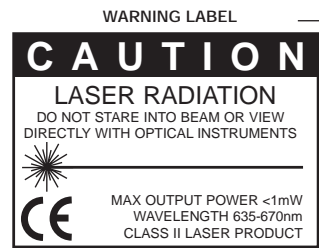
Using the other 90 degree beam, put PEG (C)
in the ground at an exact distance of 20m/60 FT
from PEG (A).

Now measure with a tape diagonally from PEG
(B) to PEG (C). The distance should be
25M+/75FT.



SAFETY LABELING

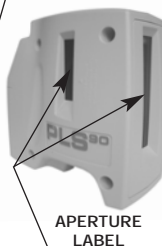
CAUTION: USE OF CONTROLS, ADJUST-
MENTS OR PROCEDURES OTHER THAN
THOSE SPECIFIED HEREIN MAY RESULT
IN HAZARDOUS RADIATION EXPOSURE.



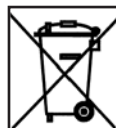
PLS90 complies with US FDA
standards, 21 CFR, Subchapter J.

These labels are attached to
every PLS laser. These are
not to be removed or defaced.

PLS • 2550 KERNER BLVD., SAN RAFAEL, CA 94901
8 0 0 6 0 1 4 5 0 0



AVOID EXPOSURE
LASER RADIATION
EMITTED FROM
THIS APERTURE



SPECIFICATIONS

Light source:	Semiconductor laser diode 635-670 nm, visible
Working range:	+/- 200 feet (outdoor w/detector)
Accuracy: Square	<1/8" @ 100 Feet (outdoor w/detector)
Plumb Down	<1/8" @ 20 Feet
Leveling:	Automatic
Leveling range:	+/- 6°
Power supply:	3AA batteries alkaline
Operating time:	+25 hours continuous use
Operating temp:	0° F to 122° F (-18° C to 50° C)
Storage temp:	-40 F to 158° F (-40° C to 70° C)
Indicator:	Green light: ON Red light: EXCEEDS TILT/ Amber light: BATTERY LOW Flashing: pulse beam- exterior
Environment:	Water resistant; not submersible
Dimensions:	5" X 2 1/4" X 4 1/2"
Weight:	1.7 lbs.(.77KG) (including batteries)

PULSED PLS90
W/DETECTOR
AVERAGE DISTANCE
AND HORIZONTAL-
VERTICAL LINE
LENGTH USING
PLS SLD LASER
DETECTOR

DISTANCE	VERTICAL LINE LENGTH
30ft	30ft
60ft	60ft
100ft	100ft



WARRANTY

This product is warranted by PLS • Pacific Laser
Systems to the original purchaser to be free from defects
in material and workmanship under normal use for a peri-
od of one year from the date of purchase. During the war-
ranty period, and upon proof of purchase, the product will
be repaired or replaced (with the same or similar model
at our option), without charge for either parts or labor,
through PLS. The purchaser shall bear all shipping,
packing and insurance costs. Upon completion of the
repair or replacement, the unit will be returned to the cus-
tomer, freight prepaid. The warranty will not apply to this
product if it has been misused, abused or altered.
Without limiting the foregoing, battery leakage, dents or
gouges to the plastic housing, broken optic windows,
damage to the switch/LED membrane are presumed to
result from misuse or abuse. Tampering with or removal
of the caution or certification labels voids this warranty.

Neither this warranty nor any other warranty, express or
implied, including implied warranties of merchantability,
shall extend beyond the warranty period. No responsibil-
ity is assumed for any incidental or consequential dam-
ages. This warranty gives you specific legal rights, and
you may have other rights which vary from state to state.

PLS Pacific Laser Systems
2550 Kerner Blvd., San Rafael, CA 94901
1 800 601 4500 www.plslaser.com